

RX2Live®

Prescription for Life

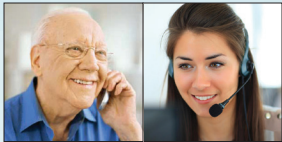
Bridging the Gaps in Well-Being



Workplace Wellness – Customizable app for employee engagement, competitions, rewards and recognition, fitness monitoring, telemedicine, boost company culture and job satisfaction, while reducing absenteeism and healthcare costs.



Senior Wellness – By working with Independent Living, Assisted Living, Skilled Nursing Facilities and Continuing Care Retirement Communities, we provided enhanced well-being for seniors with new services and products while driving new revenue to the centers.



Chronic Care Management (CCM) – Medicare CPT Code 99490 – Chronic Care Management (CCM) provides a new stream of revenue of \$18 or more per patient each month. We provide Compliant Software to capture an electronic record of 20 minutes or more of non-face-to-face visits with your patients.

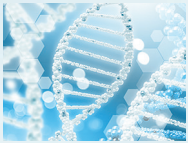


Diagnostic Lab Services – RX2Live provides comprehensive lab services to:

- Diagnose more accurately
- Detect illness and disease earlier
- Prevent the progression of illness and disease
- Develop personalized treatment strategies to improve health and wellness



Behavioral Health Screenings – RX2Live has an innovative tool that allows doctors to easily and effectively conduct mental health screenings right from their office. A true turnkey system that is automated, customized, and provides critical information about a patient's overall health. The screening system is easy to implement and can be incorporated into the operations of the practice quickly and seamlessly.



Genetic Blueprinting – The body is a very complex organism and every person is unique. That is why the “one size fits all” diet or exercise program doesn't work for everyone. We need to understand our unique body makeup at the genetic level before prescribing any exercise, diet or supplement program. It is now possible to provide insights about a person's genetic makeup quickly, reliably, and inexpensively.



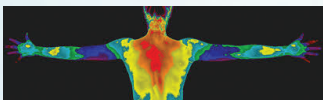
Supplementation – Take a DNA Test to determine your Genetic Blueprint with a simple swab from your cheek sent off to our lab, your basic DNA makeup is determined and your genetically preferred supplement program is recommended.



Personal Wellness and Beauty – Scientific Research has shown that plants growing near the Dead Sea possess anti-inflammatory properties, contain hair regrowth elements, prevent gingivitis, and relieve intestinal problems. Skin conditions relieved include acne, eczema, psoriasis, wrinkles and more, with 60 products to choose from.



Weight Loss System – Utilize science and modern technology to properly control your weight for life. Achieve hormonal balance to reduce unwanted fat and improve vitality. Understanding the most important foods you can eat and how they can affect your weight loss and health.



Thermal Imaging – The unique benefit of Thermography is that it can reveal changes leading to potential health problems long before they threaten your health. It's non-invasive. It's safe. It's very accurate.

Services and Products that Enhance Patient/Client Care, While Generating New Revenue

For more information: **Cathy Galligan** • (203) 815-3706 • cgalligan@rx2live.com